

Class of	Fall-06	Spring-07	Fall-07	Spring-08
2017	0	0	188	200.4
2016	188	202	199	211.8
2015	204	212	211	219.7
2014	213	222	219	225.5
2013	217	225	224	227.9
2012	223	227	229	233.2

Our district uses computerized assessment through the Northwest Evaluation Association (NWEA). These assessments, known as Measures of Academic Progress (MAP) are conducted in grades K-8 in the fall and spring -- are state-aligned computerized adaptive tests that accurately reflect the instructional level for each student and measure growth over time in the areas of Mathematics and Reading. They provide our teachers with tools to identify any achievement gaps of their students and then design individual instruction. We are using the data gained through the assessments to drive instruction in our classrooms.

Analyzing Questions

- Are our students showing growth over time?
- At what grade levels are our students showing the most/least growth?
- Why do we think this is so?

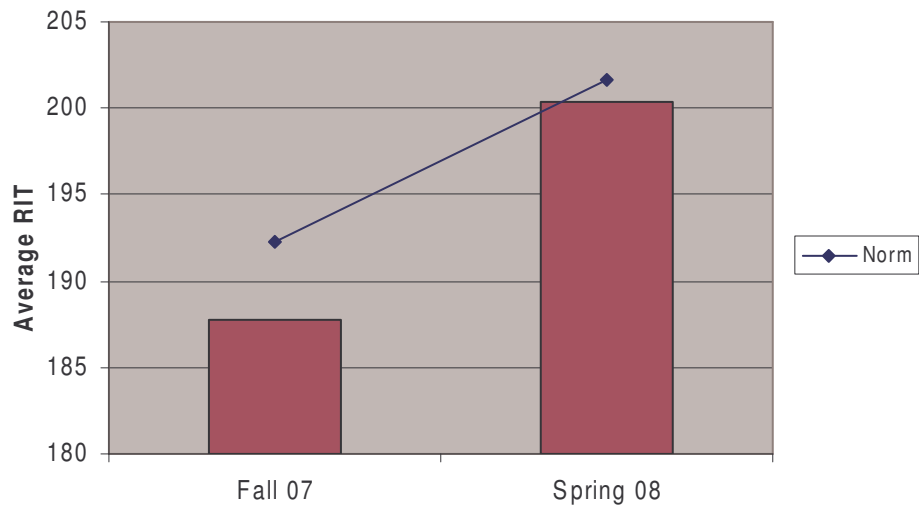
Other data to consider

- Individual student achievement
- Strand achievement
- Comparison to National norms
- Growth Data
- MEAP growth data

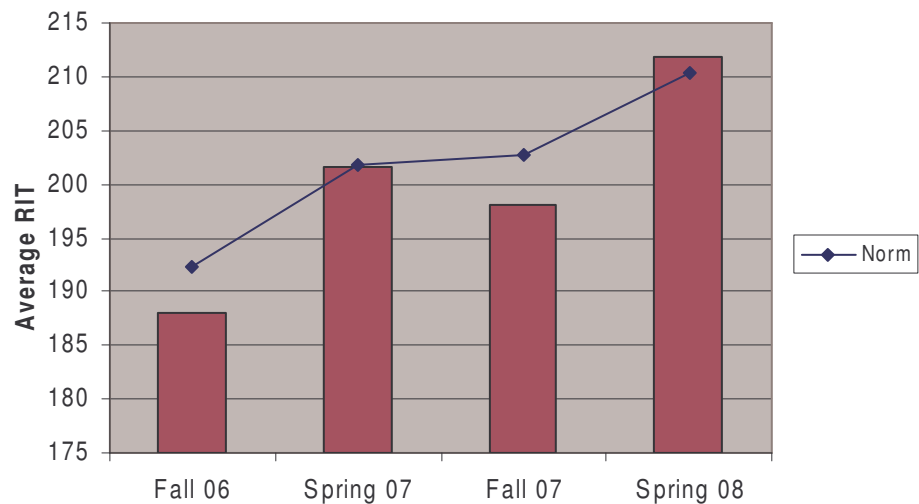
Audience

- Administrators
- Teachers

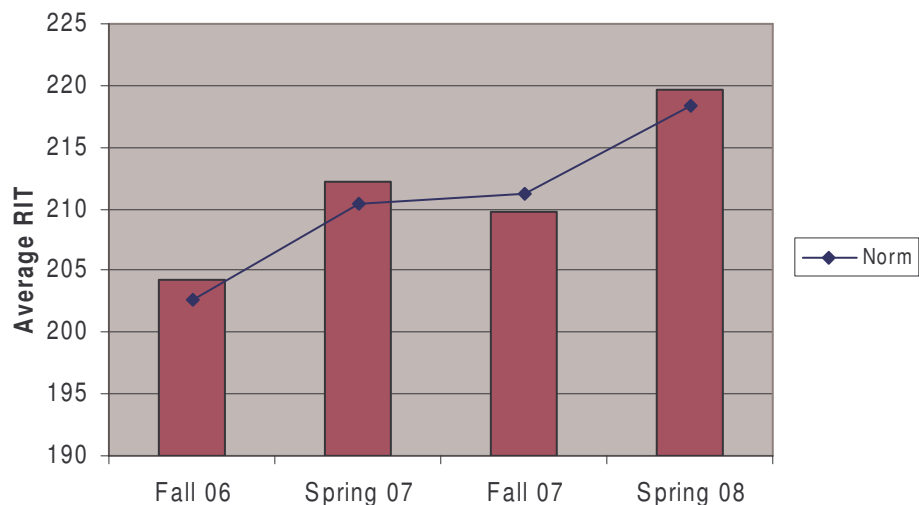
NWEA Mathematics Class of 2017



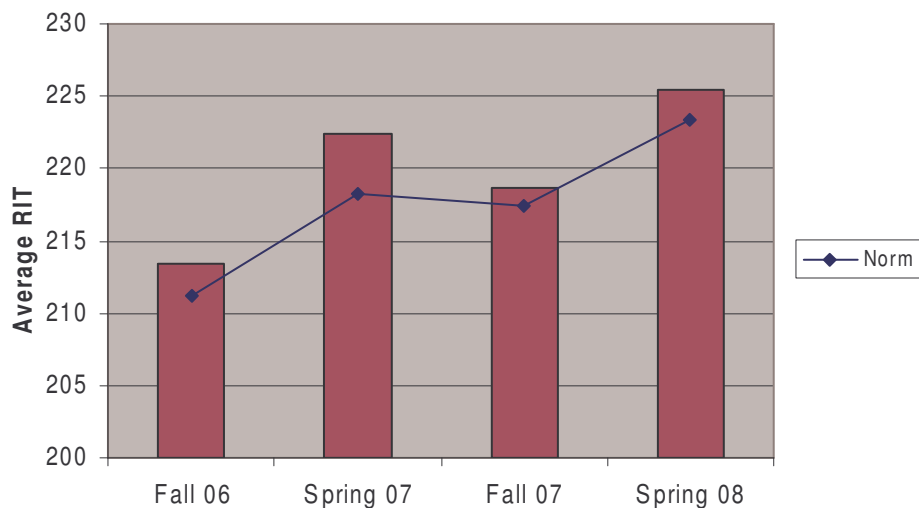
NWEA Mathematics Class of 2016



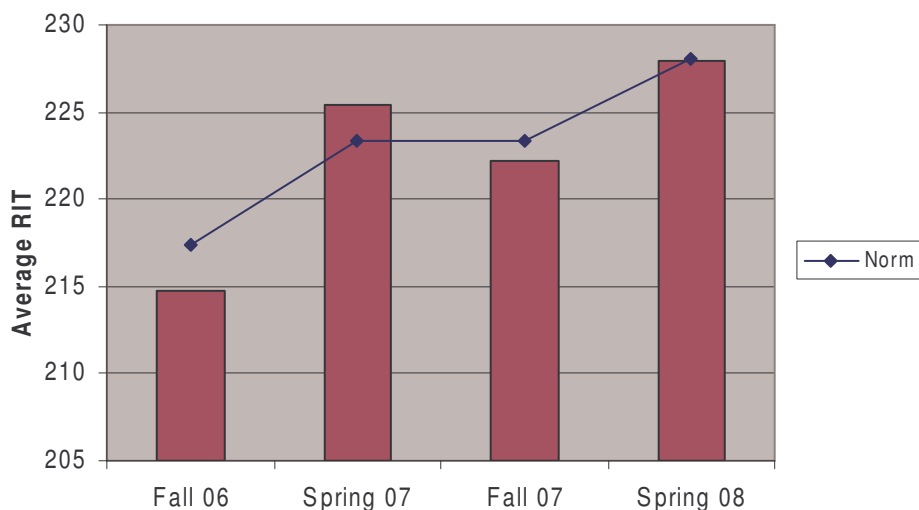
NWEA Mathematics Class of 2015



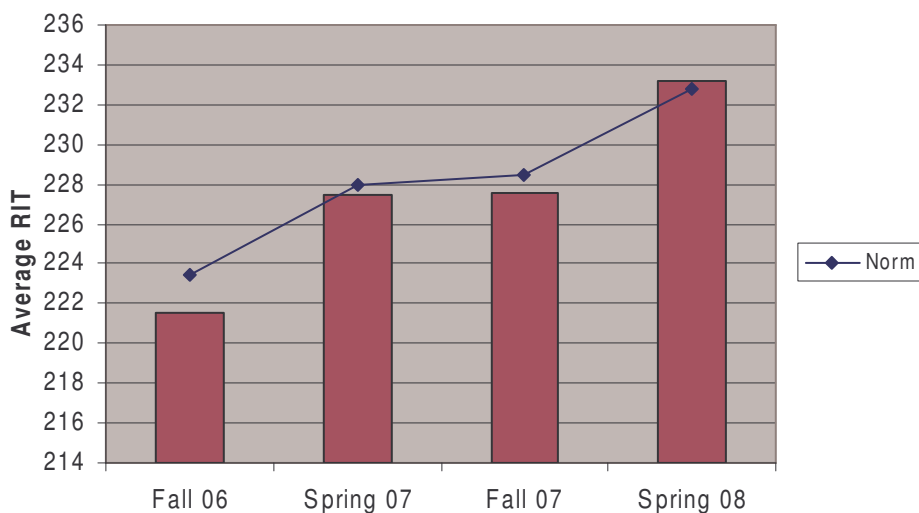
NWEA Mathematics Class of 2014



NWEA Mathematics Class of 2013



NWEA Mathematics Class of 2012



NWEA Mathematics Class of 2011

