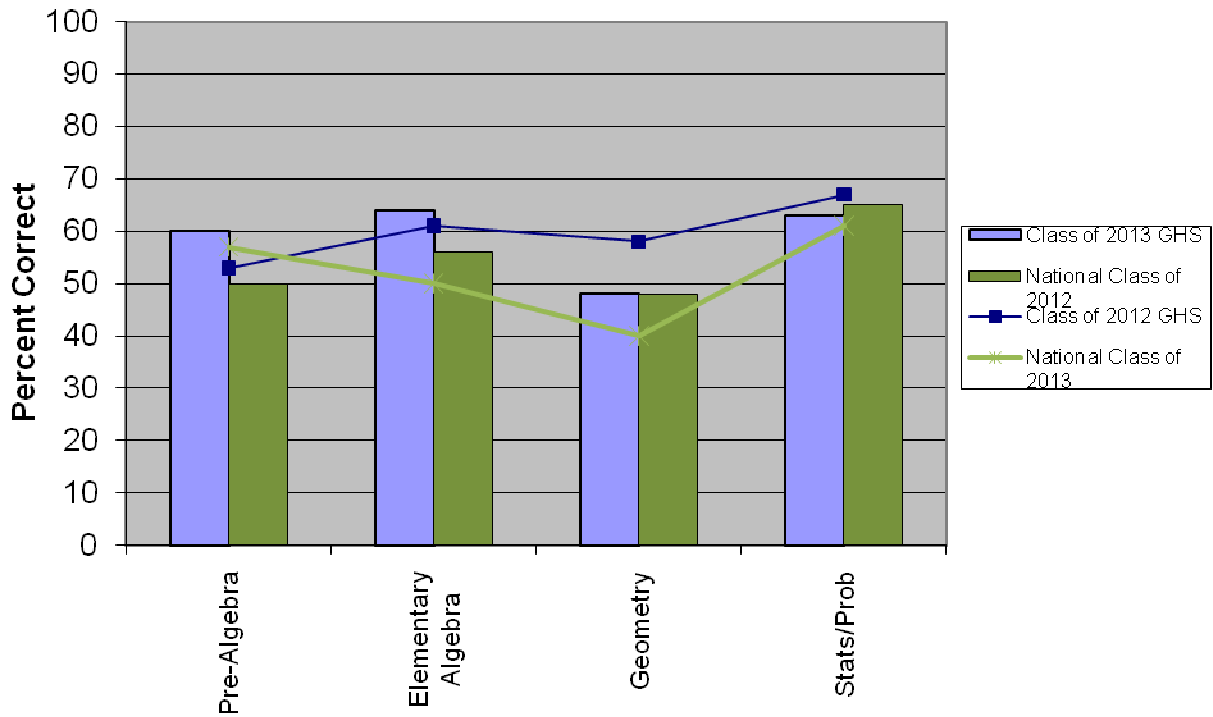


EXPLORE - Mathematics Strand Analysis



	Class of 2013 GHS	Class of 2012 GHS	National Class of 2013	National Class of 2012
Pre-Algebra	60	53	57	50
Elementary Algebra	64	61	50	56
Geometry	48	58	40	48
Stats/Prob	63	67	61	65

EXPLORE is an assessment that we use to monitor progress of the students at Grayling High School. It is given to all of our freshmen in the fall of each year beginning with the fall of 2007 although the Item Analysis was not yet available until fall 2008. EXPLORE is part of the ACT series of assessments and is comparable with the ACT. The ACT organization has conducted studies to determine what successful college students had scored on their EXPLORE assessment in their freshman year of high school and determined the college readiness standards accordingly.